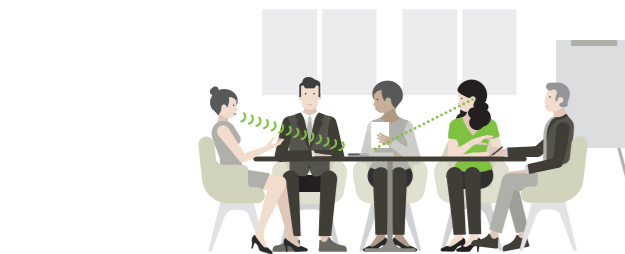
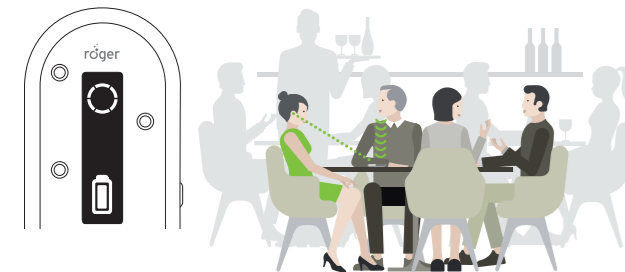


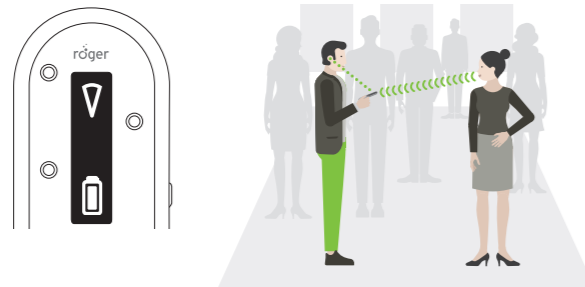
4

Table | Tisch | Table | Tafel



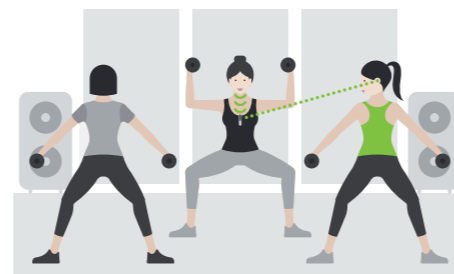
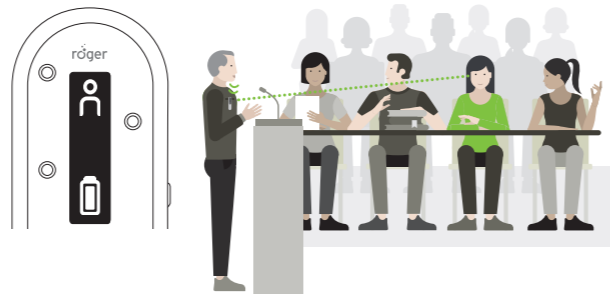
5

Pointing | In der Hand | Dans la main | In de hand



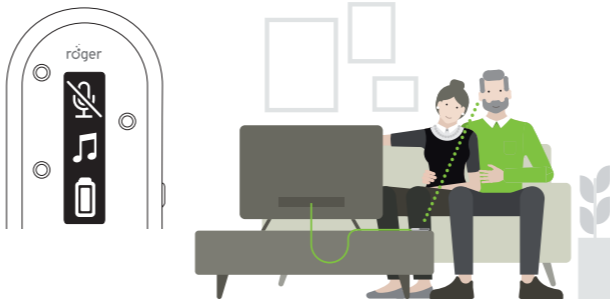
6

Presenter | Sprecher | Locuteur | Spreker



7

TV | Fernsehen | TV | Televisie



i

myRogerMic App



The Apple App Store logo is a trademark of Apple Inc. The Google Play store logo is a trademark of Google LLC.

For further information, please refer to the User Guide. | Weitere Informationen zur Anwendung finden Sie in der Gebrauchsanweisung. | Pour plus d'informations, veuillez vous référer aux instructions d'utilisation. | In de gebruiksaanwijzing vindt u meer gedetailleerde informatie.

[www.phonak.com/roger-on](http://www.phonak.com/roger-on)

Models: Roger On, Roger On iN



**Manufacturer:**  
Sonova Communications AG  
Herrenschwandweg 4  
CH-3280 Murten  
Switzerland  
[www.phonak.com](http://www.phonak.com)



029-3345V1.00/2020-08/CL © 2020 Phonak Communications AG All rights reserved



A Sonova brand

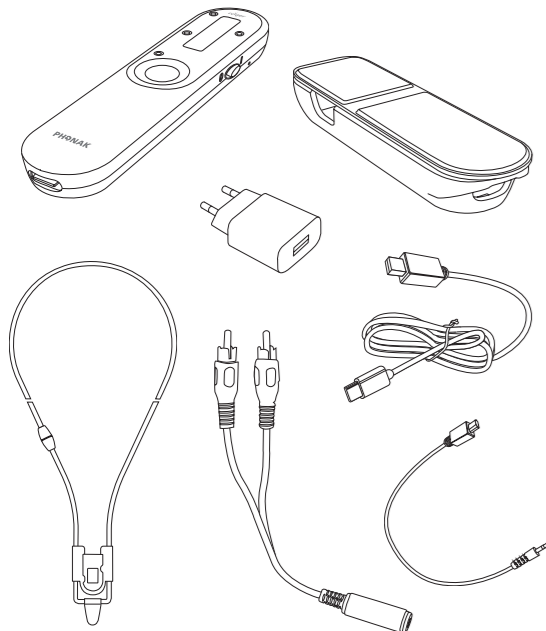
# Roger On™

Quick setup guide | Schnellstartanleitung  
Guide d'installation rapide | Snel aan de slag



i

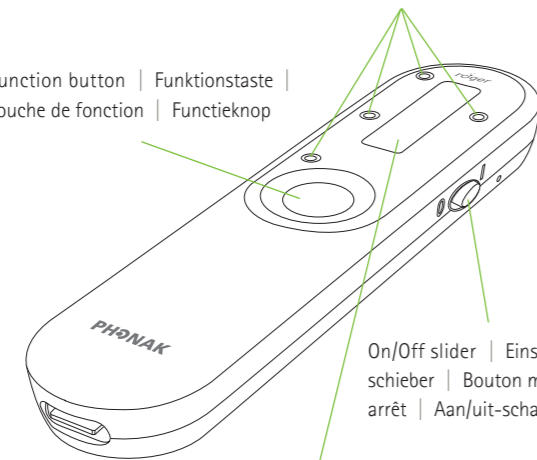
Content | Inhalt | Contenu | Inhoud



i

4 microphones | 4 Mikrofone | 4 microphones | 4 microfoons

Function button | Funktionstaste | Touche de fonction | Functieknop



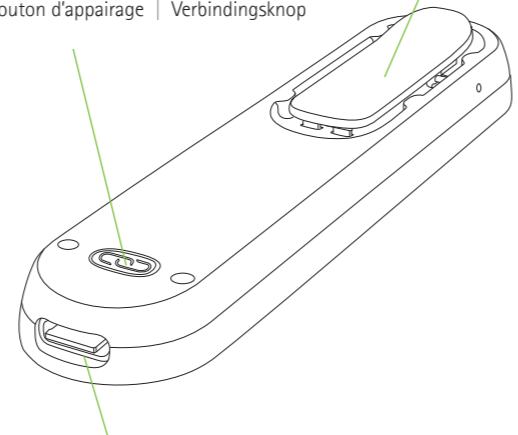
Display | Anzeige | Écran | Scherm

On/Off slider | Einschalt-schieber | Bouton marche/arrêt | Aan/uit-schakelaar

i

Connect button | Verbindungstaste | Bouton d'appairage | Verbindingsknop

Clip



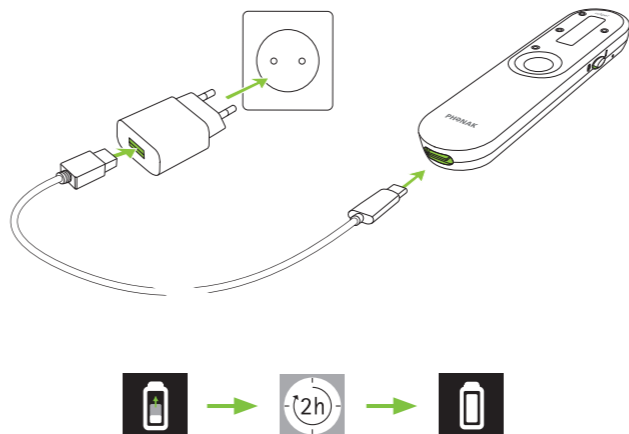
Charging input | Ladeanschluss | Prise de recharge | Charging input

i

- Table | Tisch | Table | Tafel
- Pointing | In der Hand | Dans la main | In de hand
- Presenter | Sprecher | Locuteur | Spreker
- Mute | Stumm | Muet | Dempen
- Automatic | Automatisch
- Locked | Gesichert | Barré | Op slot
- Audio
- ~8h
- ~4h
- Charge! | Laden! | Chargez! | Laden!

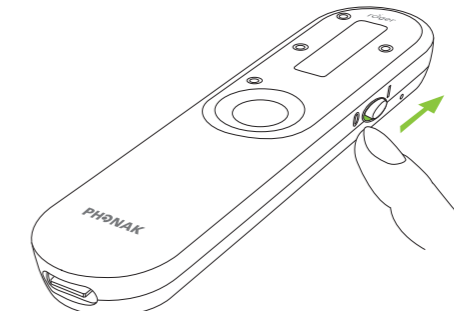
1

Charging | Aufladen | Charger | Laden



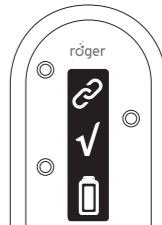
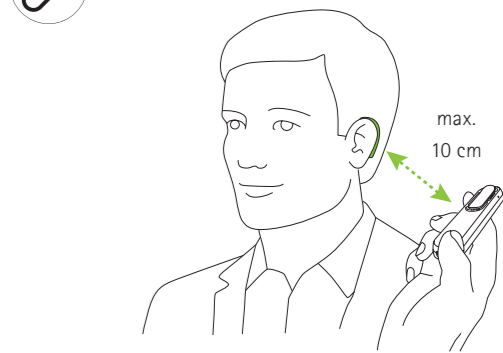
2

Switching on | Einschalten | Mettre en marche | Inschakelen

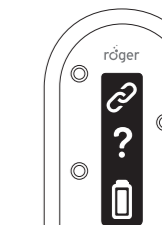


3

Connecting | Verbinden | Connecter | Verbinden



Done | Erledigt | Terminé | Gedaan



Go closer | Gehen Sie näher heran | Va plus près | Kom dichterbij